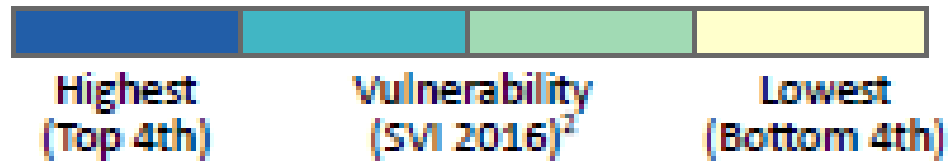


The Social Vulnerability Index and Louisiana Region 4

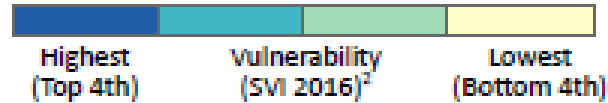


Planning for Vulnerable Populations

SVI Overview

- Every community must prepare for and respond to hazardous events, whether a natural disaster like a tornado or disease outbreak, or a human-made event such as a harmful chemical spill.
- Factors, including poverty, lack of access to transportation, and crowded housing may weaken a community's ability to prevent human suffering and financial loss in a disaster. These factors are known as **social vulnerability**

What is the SVI?

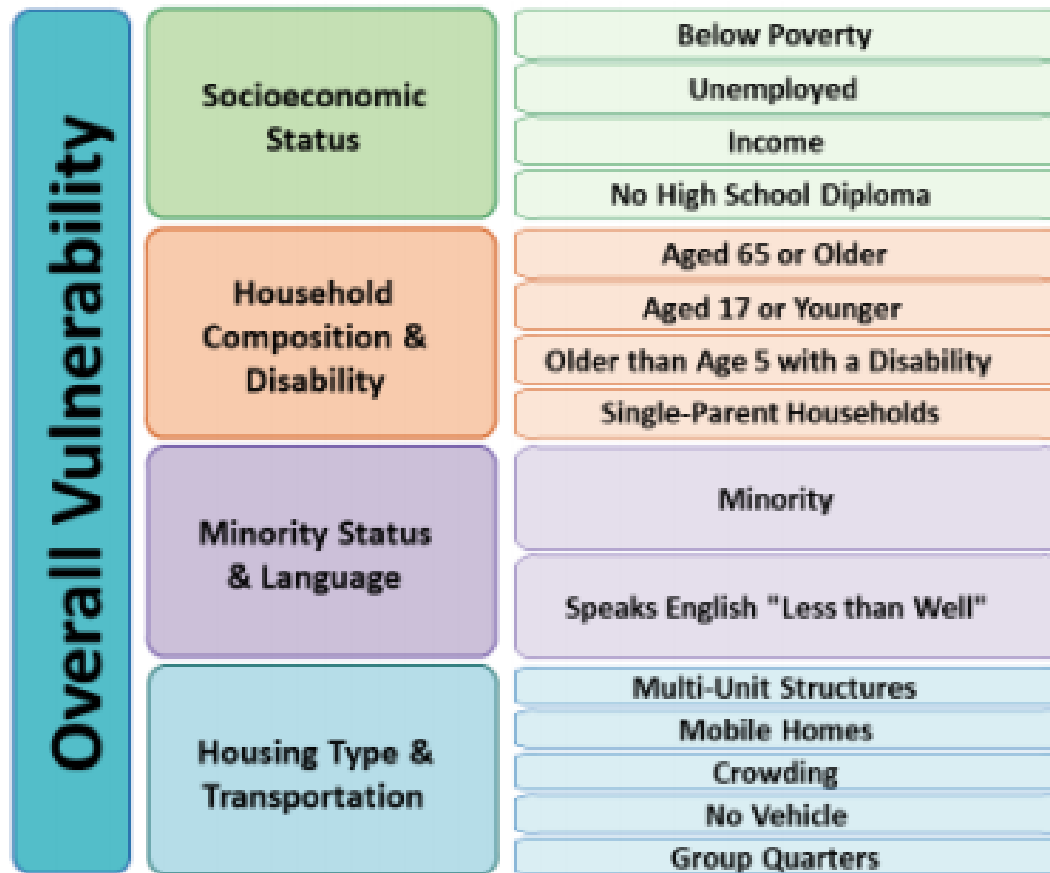


- CDC created databases to help emergency response planners and public health officials identify and map communities that will most likely need support before, during, and after a hazardous event.
- SVI uses U.S. Census data to determine the social vulnerability of every census tract. Census tracts are subdivisions of counties/parishes.
- The SVI ranks each tract on 15 social factors and groups them into four(4) related themes.
- Each tract is “mapped” and receives a separate ranking for each of the four themes, as well as an overall ranking.

Methods

Variables Used

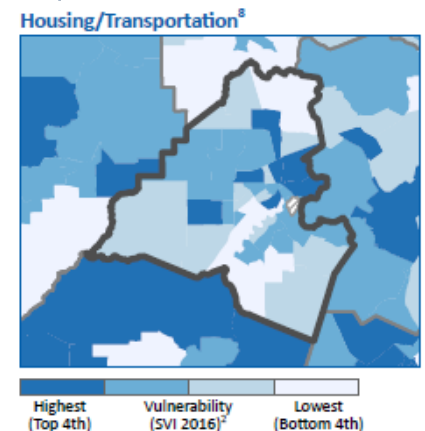
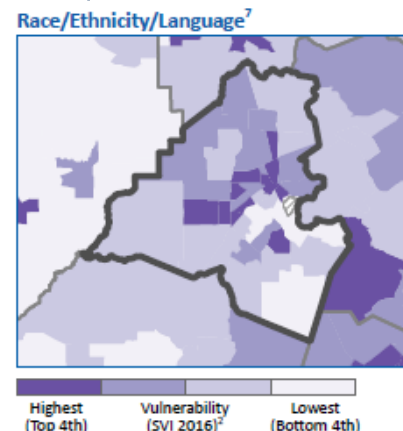
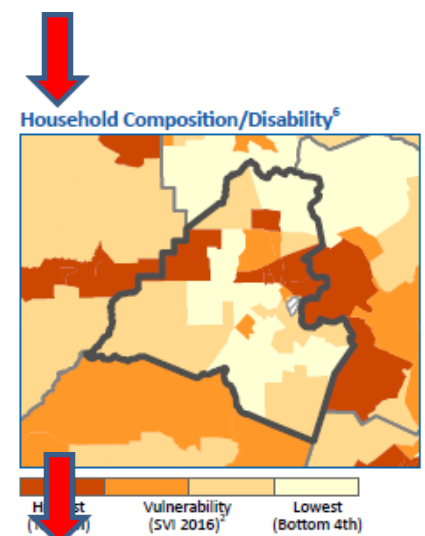
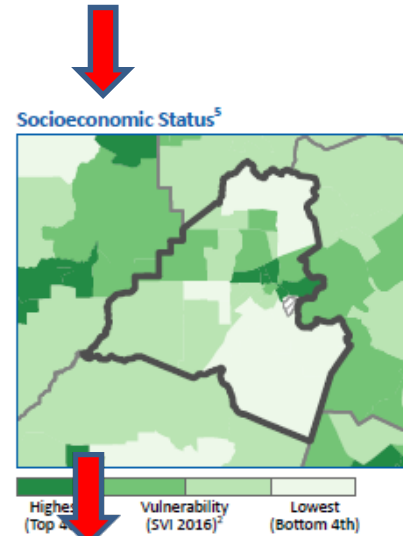
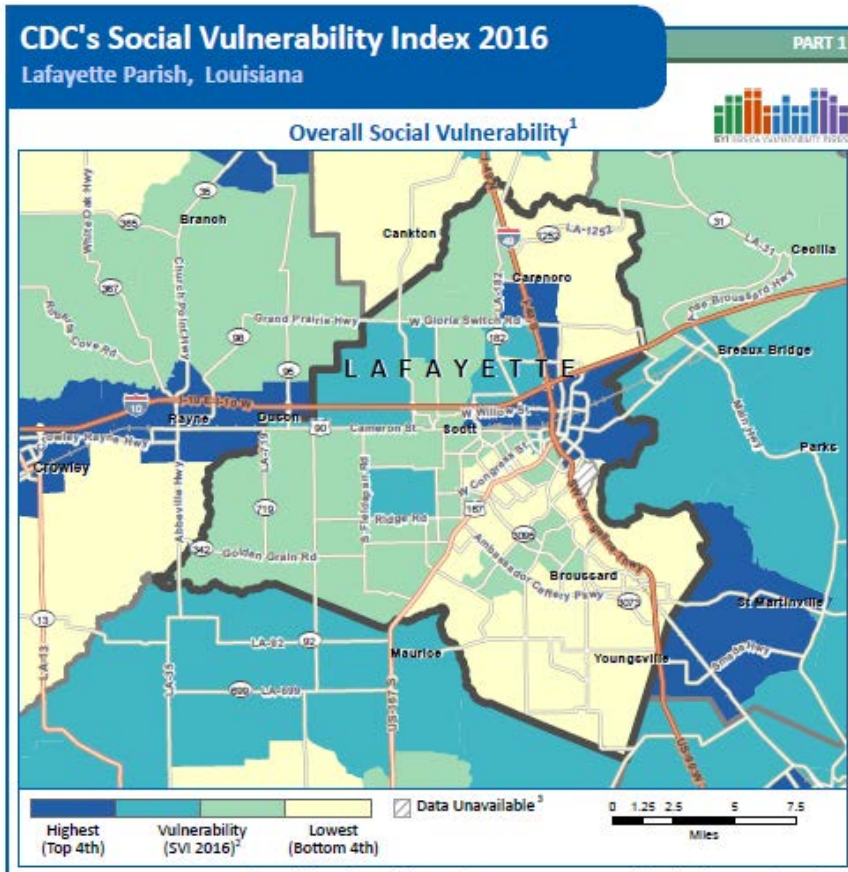
American Community Survey (ACS), 2014-2018 (5-year) data for the following estimates:



Example – Lafayette Parish

Overall Ranking

4 Themes Ranked

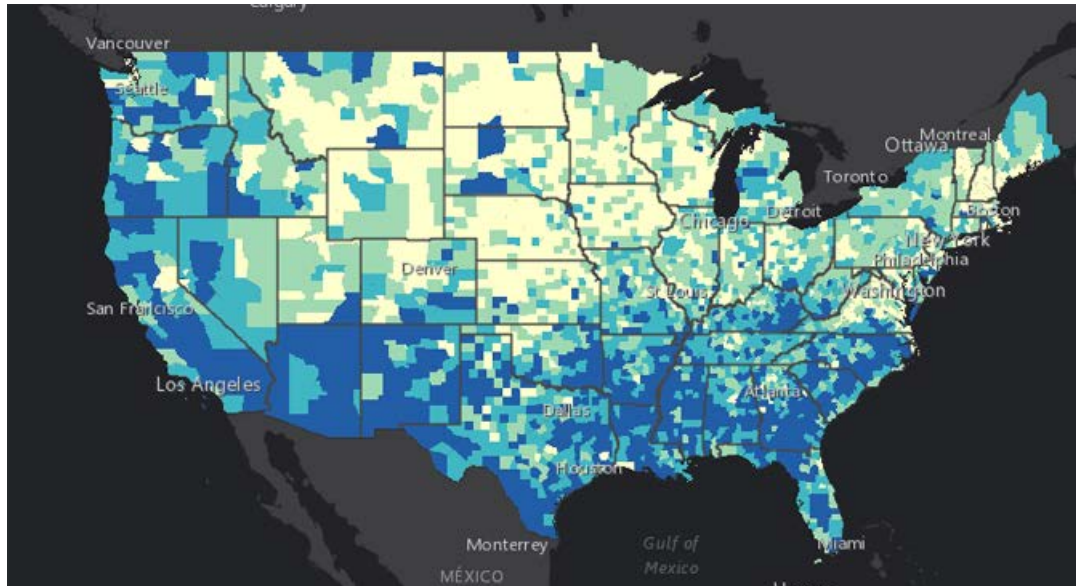


SVI Can Factor into:

- Allocate emergency preparedness funding by community need.
- Estimate the amount and type of needed supplies like food, water, medicine, and bedding.
- Decide how many emergency personnel are required to assist people.
- Identify areas in need of emergency shelters.
- Create a plan to evacuate people, accounting for those who have special needs, such as those without vehicles, the elderly, or people who do not understand English well.
- Identify communities that will need continued support to recover following an emergency or natural disaster.

Accessing SVI

- Home page <https://svi.cdc.gov/>



Navigating

- Go to...
 - <https://svi.cdc.gov/> > Prepared County Maps >
 - Complete the drop-downs > View County Map

The screenshot displays the ATSDR website interface for the CDC's Social Vulnerability Index (SVI). The header includes the ATSDR logo and the text 'Agency for Toxic Substances and Disease Registry'. A search bar is located in the top right corner. Below the header, there is a green navigation bar with the text 'CDC's Social Vulnerability Index (SVI)'. On the left side, there is a vertical menu with options: 'SVI Home', 'Fact Sheet', 'Data & Tools Download', 'Publications & Materials', 'SVI Interactive Map', and 'Prepared County Maps'. The main content area is titled 'Prepared County Maps' and features social media icons for Facebook, Twitter, and a plus sign. Below this, there is a section titled 'Download County Maps' with the instruction 'Select from the dropdown menus below to view the prepared county map.' This section contains three dropdown menus: 'Year' (set to 2016), 'State' (with the placeholder '..... Select a state'), and 'County' (with the placeholder '..... Select a state first ...'). A 'View County Map' button is positioned below the dropdowns. There is also a link for '* Printing Tips' and a note about PDF display not loading, with a link to download the most recent version of Adobe Reader. At the bottom of the page, there is a 'File Formats Help' section and a footer with various icons and links: 'About CDC / ATSDR', 'Jobs', 'Funding', 'Policies', 'Privacy', 'FOIA', 'No Fear Act', and 'OIG'.

Region 4 - SVI by Parish

- Acadia
 - https://svi.cdc.gov/Documents/CountyMaps/2016/Louisiana/Louisiana2016_Acadia.pdf
- Evangeline
 - https://svi.cdc.gov/Documents/CountyMaps/2016/Louisiana/Louisiana2016_Evangeline.pdf
- Iberia
 - https://svi.cdc.gov/Documents/CountyMaps/2016/Louisiana/Louisiana2016_Iberia.pdf
- Lafayette
 - https://svi.cdc.gov/Documents/CountyMaps/2016/Louisiana/Louisiana2016_Lafayette.pdf
- St Landry
 - https://svi.cdc.gov/Documents/CountyMaps/2016/Louisiana/Louisiana2016_St.%20Landry.pdf
- St Martin
 - https://svi.cdc.gov/Documents/CountyMaps/2016/Louisiana/Louisiana2016_St.%20Martin.pdf
- Vermillion
 - https://svi.cdc.gov/Documents/CountyMaps/2016/Louisiana/Louisiana2016_Vermilion.pdf